

THE SCOTS COLLEGE

29-53 Victoria Rd, Bellvue Hill NSW 2023

Parking Format

LEGEND:

—————

—————

—————

—————

SW
ESW
S
SS

STORMWATER
EXISTING STORM WATER
SANITARY DRAINAGE
SUB SOIL DRAINAGE

L/s
CAT.
RL.
O/F
IV.L
S.I.P
C.O
GT
W.T
H/L
IO

LITRES PER SECOND
CATCHMENT
SURFACE/REAL LEVEL
OVERFLOW
INVERT LEVEL
STORMWATER INLET PIT
CLEAR OUT
SURCHARGE GULLY
WATER TANK
HIGH LEVEL
INSPECTION OPENING

H0

CONTINUES ON PLAN H0

O/F

OVERLAND FLOW PATH

RISER
SERVICE
SIZE
DROPPER

AUTHORITY:

- WOOLLAHRA COUNCIL DCP 2015

- NSW WORKCOVER

INSTALLATION STANDARDS
AND CODES:

- NCC 2019 VOL 3 PLUMBING CODE OF AUSTRALIA

- AS3500.3

STORMWATER MANAGEMENT DESIGN AND SITE HYDROLOGY

DESIGN IS BASED ON COMPLIANCE WITH WOOLLAHARA COUNCIL

- RAINWATER REUSE

- WATER QUALITY

DESIGN STORM EVENT

- 1 IN 20 YR IFD = 210mm/hr FOR PIT AND PIPE SYSTEM

- 1 IN 100 YR IFD = 270mm/hr FOR OVERLAND FLOW

GENERAL NOTES:

- THE DRAWINGS ARE A GUIDE ONLY FOR THE LOCATION AND LAYOUT OF THE SERVICE PIPES.
DO NOT SCALE FROM THESE DRAWINGS.

-VERIFY THAT ALL INVERT LEVELS, SURFACE LEVELS AND CLEARANCES ARE CORRECT AND
OBTAINABLE PRIOR TO COMMENCING WORKS.

-ALL WORKS TO BE CONSTRUCTED IN ACCORDANCE WITH AS/NZS 3500, THE LOCAL AUTHORITY
AND THE NATIONAL CONSTRUCTION CODE 2016 / PLUMBING CODE OF AUSTRALIA.

-ALL PLUMBING AND DRAINAGE MATERIALS SHALL BE IN ACCORDANCE WITH AS/NZS 3500, THE
LOCAL AUTHORITY AND THE NATIONAL CONSTRUCTION CODE 2016 / PLUMBING CODE OF AUSTRALIA.

-WORKS SHALL BE CONSTRUCTED BY SUITABLY QUALIFIED, COMPETENT AND LICENSED TRADES PEOPLE.

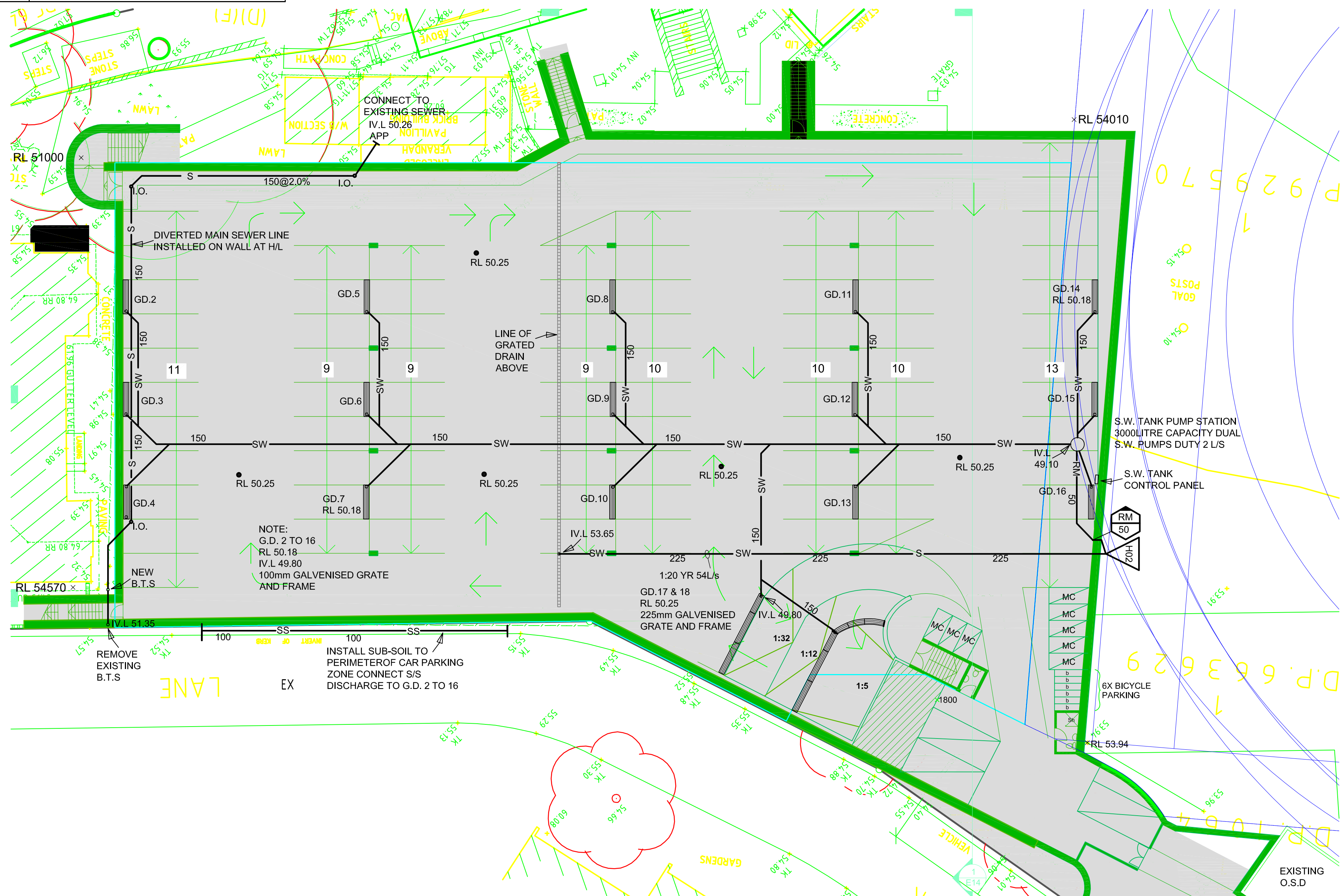
-PAY ALL COSTS FOR THE TESTING OF THE INSTALLATION AND COSTS FOR INSPECTION BY LOCAL AUTHORITY.


-UNDERTAKE ALL OF THE TESTING REQUIREMENTS OF THESE DRAWINGS, THE CONTRACT
DOCUMENTS, RELEVANT CODES, STANDARDS AND LEGISLATION. UNO.

-ALL PIPE DIAMETERS DETAILED ON THESE DRAWINGS ARE SHOWN AS NOMINAL INTERNAL DIAMETERS.
NOMINAL DIAMETER SHALL BE TAKEN AS THE INTERNAL DIAMETER OF THE PIPEWORK AND NOT
THE OUTSIDE DIAMETER. FOR NOMINAL DIAMETERS UP TO DN50, REFER TO AS/NZS 3500.1 APPENDIX J UNO.

-UNDERGROUND MARKING TAPE: TO AS/NZS 2648.1. LAY PLASTIC WARNING TAPE WITH
INTEGRATED WIRE TRACE, 350mm ± 50mm ABOVE ALL BURIED PIPING, FOR THE FULL LENGTH OF
THE PIPING. COVER THE TAPE WITH APPROXIMATELY 100mm DEEP SAND.

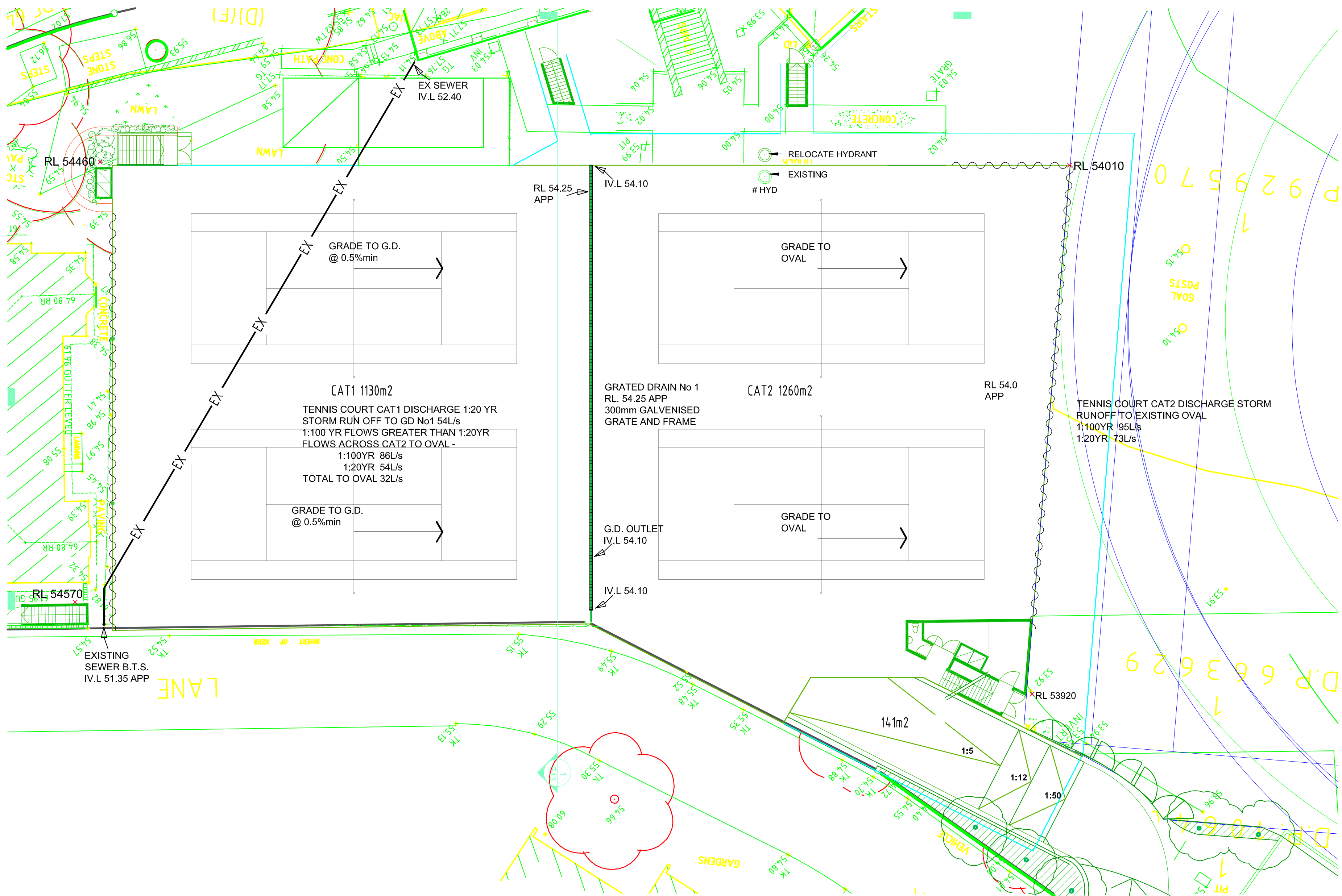
-PROVIDE TRENCH MARKER TAPE THAT CLEARLY IDENTIFIES THE SERVICE BELOW.




B	DA	08/10/19	Project:		Date: 08/10/19	Drawn By: MB	Drawing No.			14 Page Street Moruya N.S.W. 2537 Ph: (02)44742401 Email: jcl@netspeed.com.au	North Point.	
			THE SCOTS COLLEGE		Scale: 1:200	A2	Design By: JO	2019/V-35-H01				
			Drawing Title: CARPARKING LEVEL SEWER AND STORMWATER		Plan No. 2/4	Checked By: JO	Issued For:					DA
Issue:	Description:	Date:										

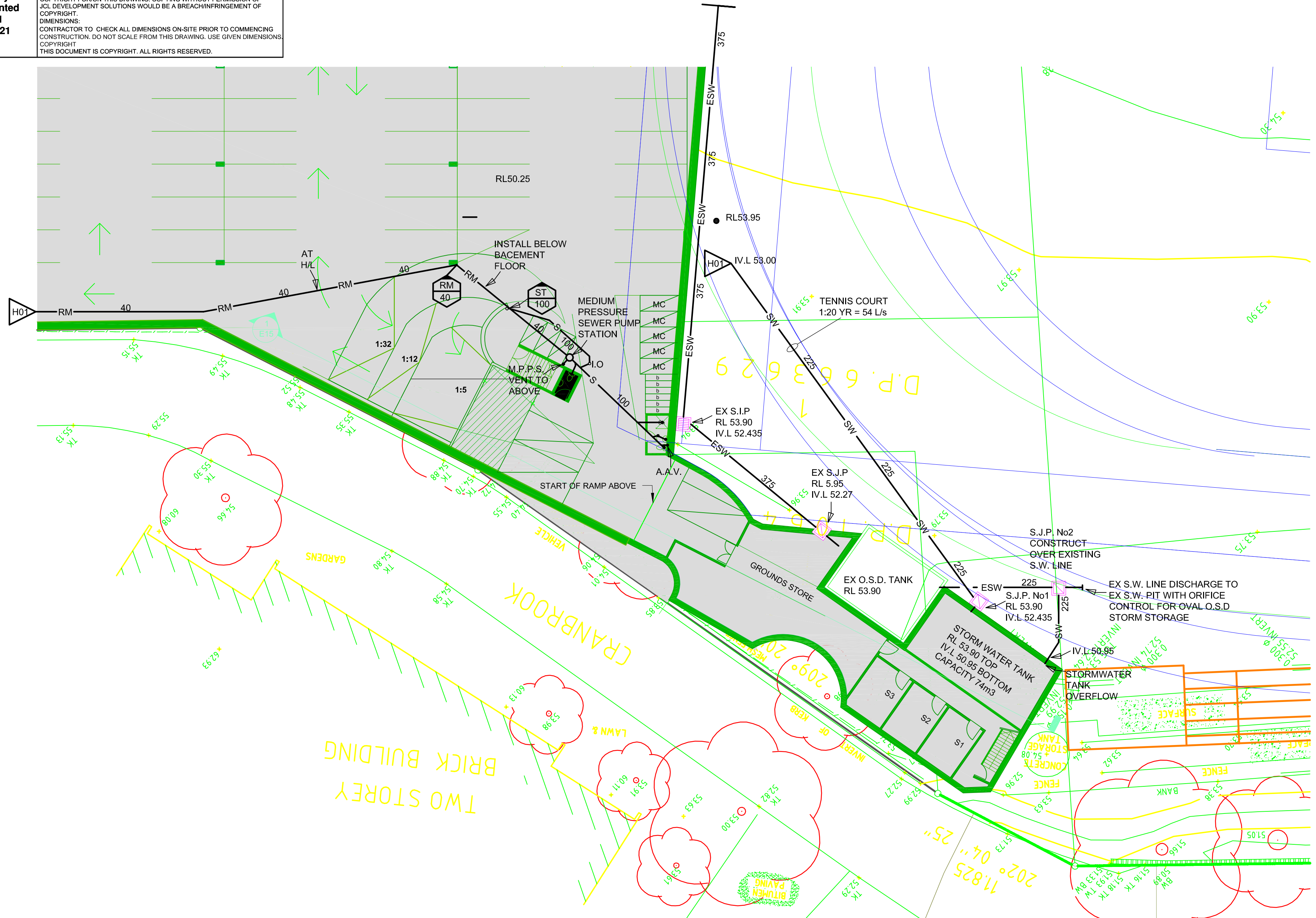
Quality System
Implemented
ISO. 9091
Lic No. 221


BE ADVISED THAT JCL DEVELOPMENT SOLUTIONS HOLDS/DOWN THE
COPYRIGHT FOR/ON THIS DRAWING. COPYING WITHOUT PERMISSION OF
JCL DEVELOPMENT SOLUTIONS WOULD BE A BREACH/INFRINGEMENT OF
COPYRIGHT.
DIMENSIONS:
CONTRACTOR TO CHECK ALL DIMENSIONS ON-SITE PRIOR TO COMMENCING
CONSTRUCTION. DO NOT SCALE FROM THIS DRAWING. USE GIVEN DIMENSIONS.
COPYRIGHT
THIS DOCUMENT IS COPYRIGHT. ALL RIGHTS RESERVED.



B	DA	08/04/16	Project:		Date: 08/10/19	Drawn By: MB	Drawing No.			14 Page Street Moruya N.S.W. 2537 Ph: (02)44742401 Email: jcl@netspeed.com.au	North Point.	
			THE SCOTS COLLEGE		Scale: 1:200	A2	Design By: MB	2019/V-35-H03				
			Drawing Title: TENNIS COURT LEVEL SEWER AND STORMWATER		Plan No. 4/4		Checked By: JO	Issued For:				
Issue:	Description:	Date:					DA	B				

BE ADVISED THAT JCL DEVELOPMENT SOLUTIONS HOLDS/OWN THE
COPYRIGHT FOR/ON THIS DRAWING. COPYING WITHOUT PERMISSION OF
JCL DEVELOPMENT SOLUTIONS WOULD BE A BREACH/INFRINGEMENT OF
COPYRIGHT.
DIMENSIONS:
CONTRACTOR TO CHECK ALL DIMENSIONS ON-SITE PRIOR TO COMMENCING
CONSTRUCTION. DO NOT SCALE FROM THIS DRAWING. USE GIVEN DIMENSIONS.
COPYRIGHT
THIS DOCUMENT IS COPYRIGHT. ALL RIGHTS RESERVED.



B	DA	08/10/19	Project:		Date:	08/10/19	Drawn By:	MB	Drawing No.			14 Page Street Moruya N.S.W. 2537 Ph: (02)44742401 Email: jcl@netspeed.com.au	North Point.	
			THE SCOTS COLLEGE		Scale:	1:200	A2	Design By:	JO	2019/V-35-H02				
			Drawing Title: CAR PARKING LEVEL SEWER AND STORMWATER		Plan No.	3/4	Checked By:	JO	Issued For:					DA